

OFFICE SPACE FOR LEASE

2,230-5,058 SF AVAILABILITIES



2 CORPORATE PARK | IRVINE, CALIFORNIA 92606

Voit

REAL ESTATE SERVICES

Property Touring Guidelines >

LIZ HURLEY
Sr Vice President

949.263.5325
LHurley@voitco.com
Lic. #00931852

CHRIS DRZYGA
Vice President

949.263.5303
ChrisD@voitco.com
Lic. #01926212

PATRICK MCCREDIE
Senior Associate

949.263.5321
PMccredie@voitco.com
Lic. #02014408

2020 Main Street, Suite 100, Irvine, California 92614 | 949.851.5100 | 949.261.9092 Fax

www.VoitCo.com

The information contained herein has been obtained from sources we deem reliable. While we have no reason to doubt its accuracy, we do not guarantee it. ©2019 Voit Real Estate Services, Inc.

2 CORPORATE PARK | IRVINE, CALIFORNIA 92606

OFFICE SPACE FOR LEASE

PROPERTY FEATURES:

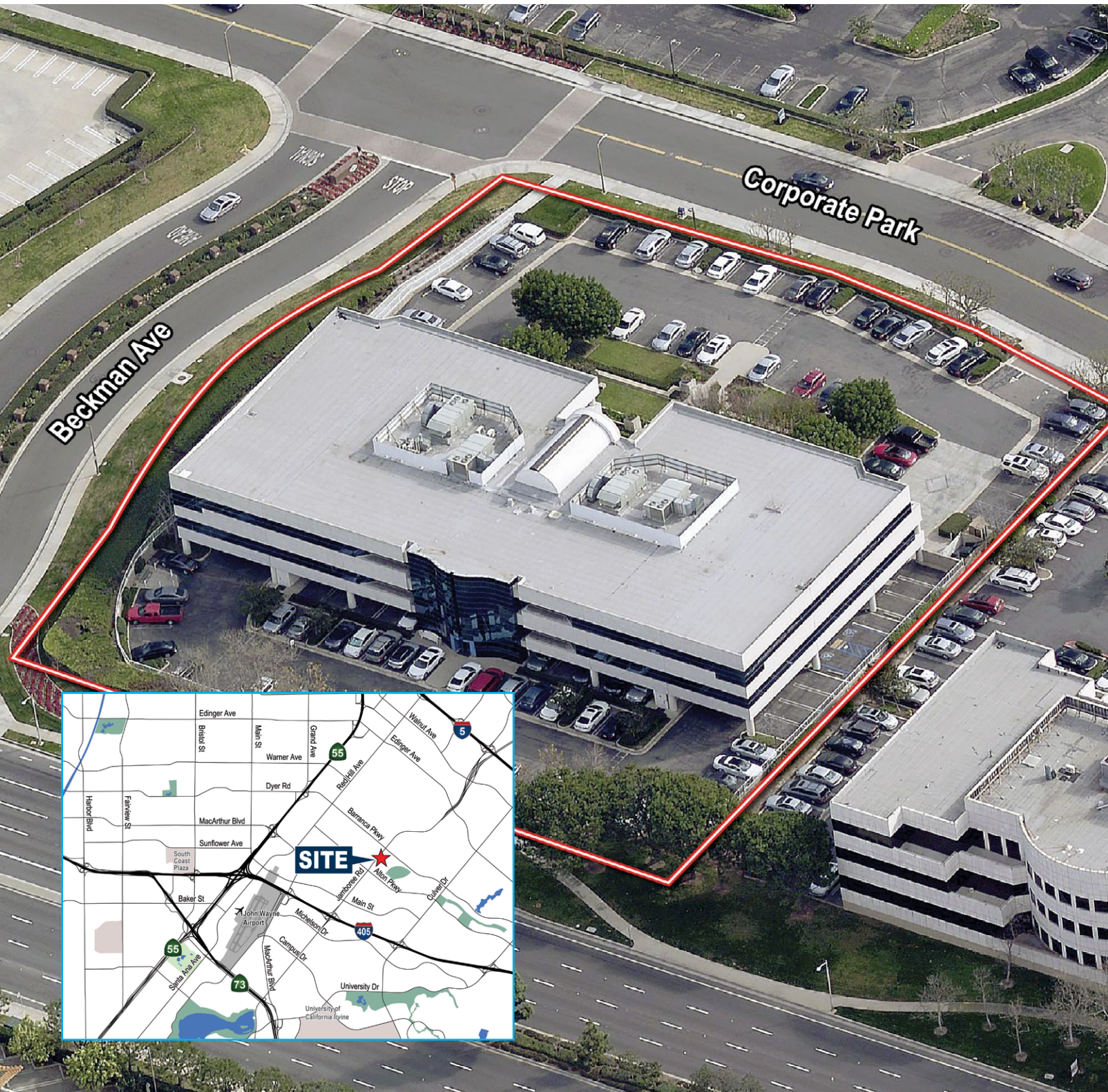


- New spec suites, immediate occupancy
- 2,230 – 5,058 SF availabilities
- Updated Common Areas & Outdoor Seating
- Surface & covered parking
- Strategic location near 5, 405 & 55 FWYS
- Numerous food & retail amenities
- Shuttle service from Tustin Station to Jamboree Road nearby
- 2.8 Miles to John Wayne Airport
- 2.1 miles to Metrolink Tustin Station
- On-site full-time facility manager

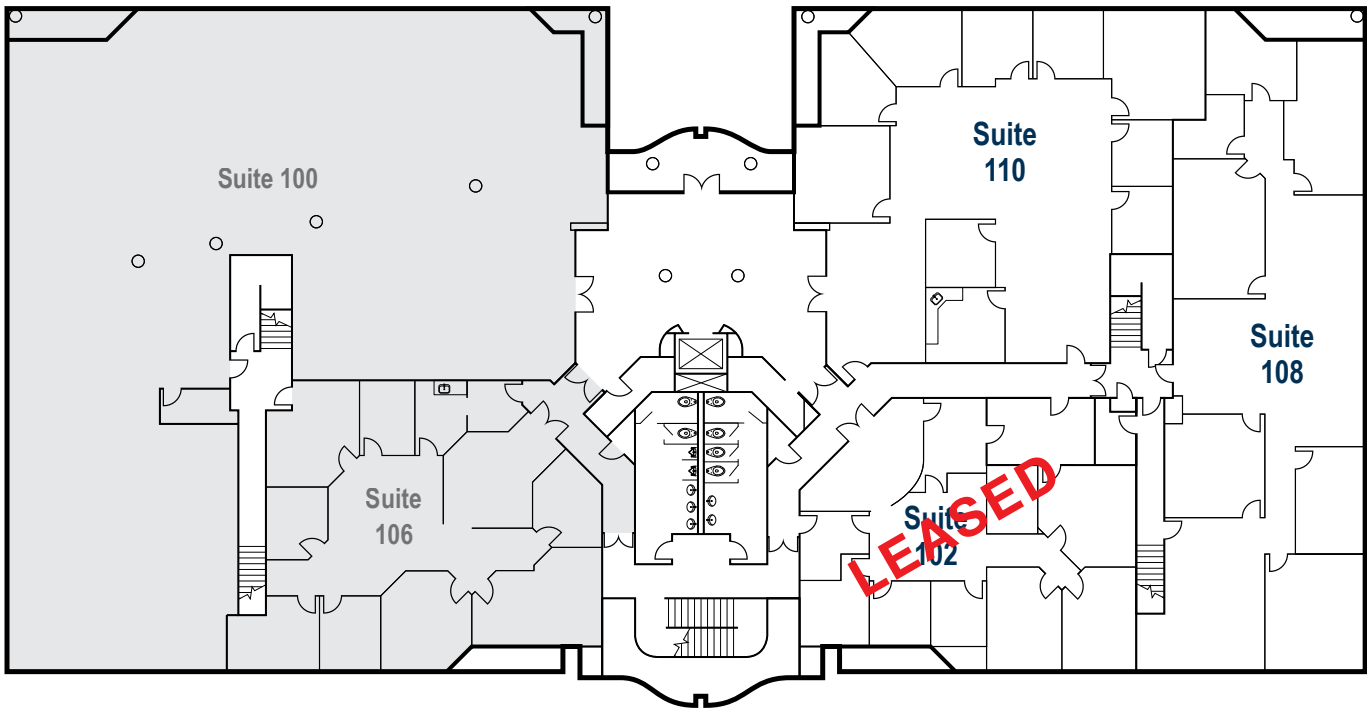
CORPORATE PARK



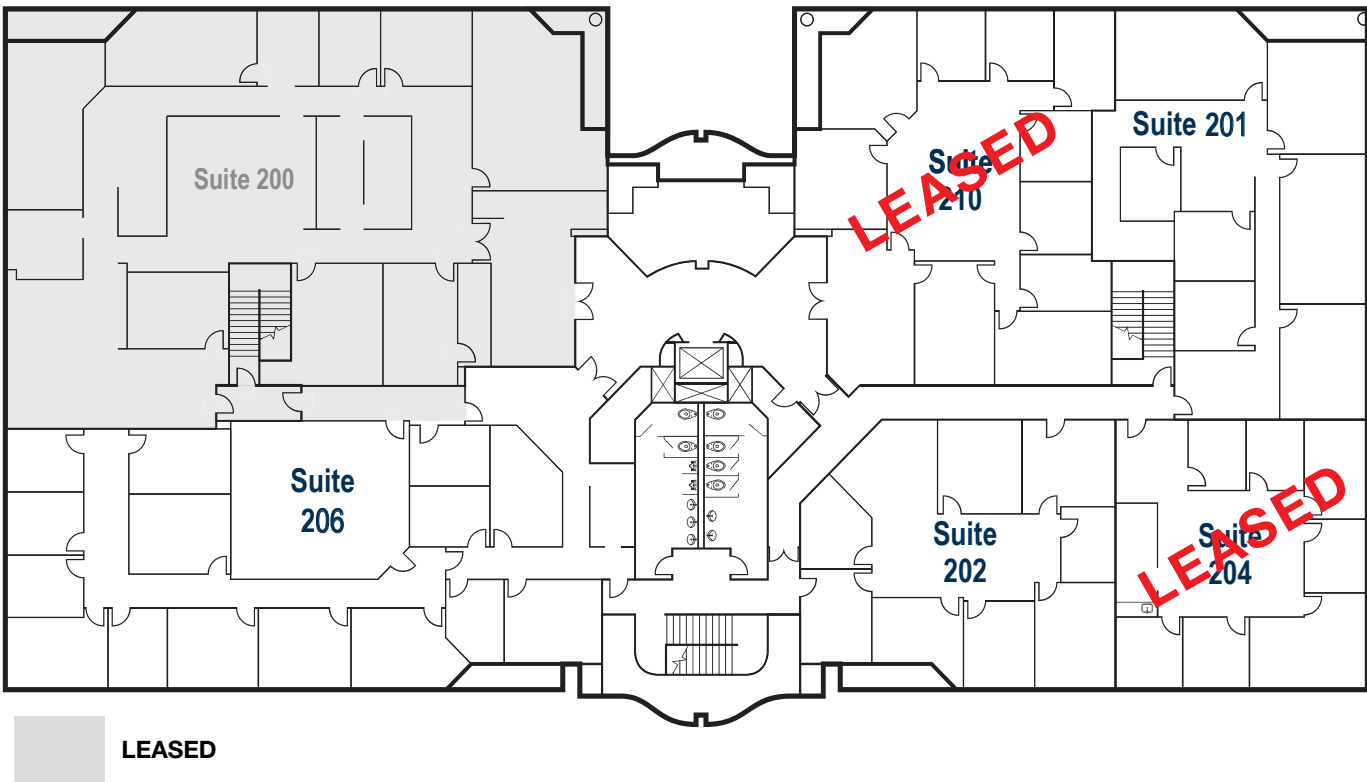
OFFICE SPACE FOR LEASE



FIRST FLOOR



SECOND FLOOR



OFFICE SPACE FOR LEASE

2 CORPORATE PARK | IRVINE, CALIFORNIA 92606

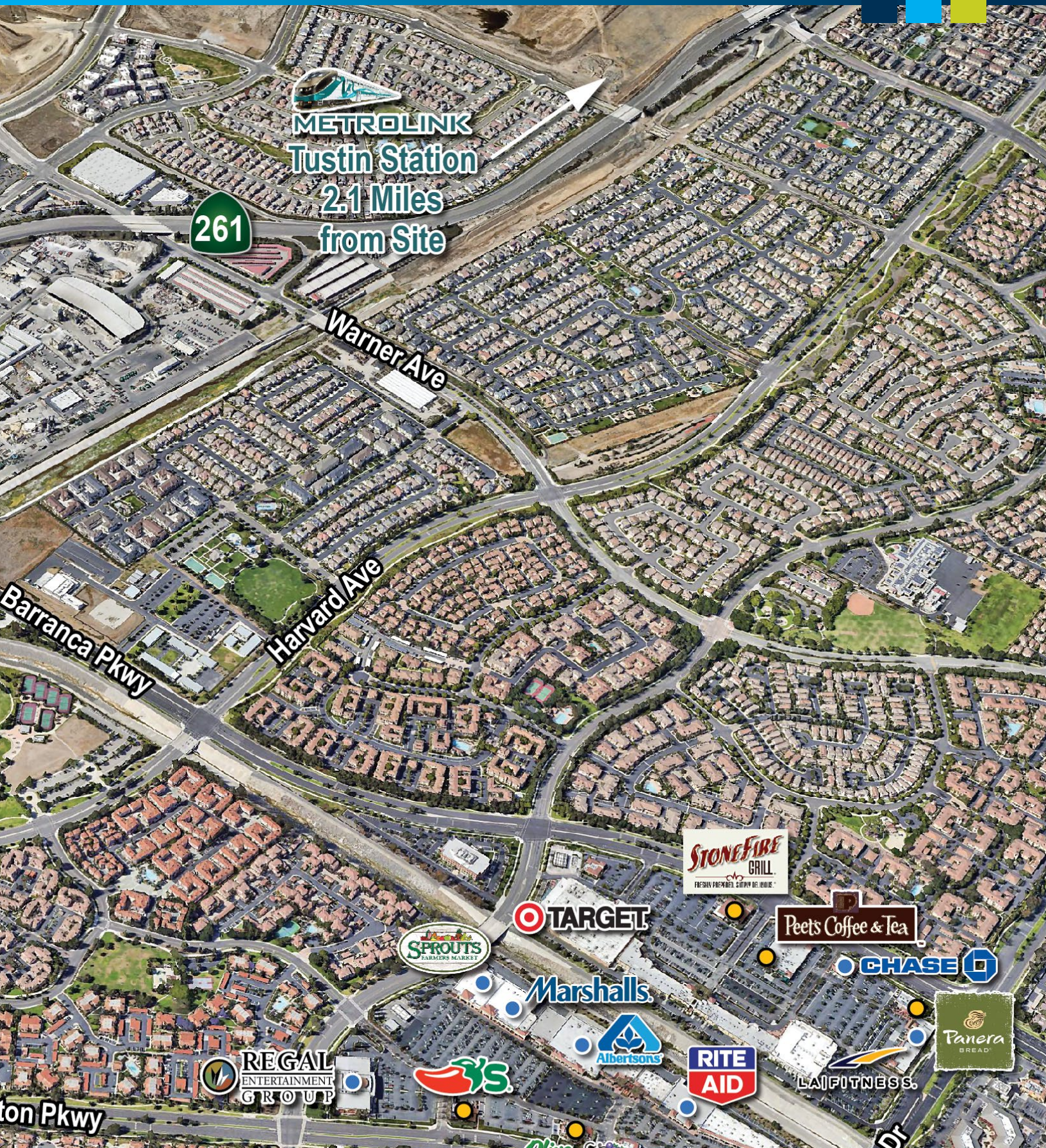
AVAILABILITIES

RENTABLE SF	SUITE	DESCRIPTION	RATE
2,440 SF	102	8 offices, kitchenette with sink, 11 storage room, 2nd generation suite	\$2.65 FSG
3,717 SF	108	New spec suite with 4 large offices, conference room, kitchenette with sink, private bathroom, private entrance provides direct access to covered parking. 3 sides of glass	\$2.65 FSG
3,886 SF	110	New spec suite with double glass entrance directly off main lobby, 8 offices, glass conference room, open area & kitchenette with sink	\$2.65 FSG
2,527 SF	201	5 offices, conference room, break room and reception. 2nd generation suite	\$2.65 FSG
2,230 SF	202	6 offices, conference room, open area, kitchenette with sink. 2nd generation suite	\$2.65 FSG
1,962 SF	204	Reception area, 6 offices, conference room, open area, kitchenette with sink. 2nd generation suite	\$2.65 FSG
5,058 SF	206	Dedicated reception, perimeter offices, large conference room, breakroom with sink, 2nd generation suite	\$2.65 FSG
3,289 SF	210	New spec suite with double glass entry off lobby. Reception, glass conference, 8 offices, open area & kitchenette with sink	\$2.65 FSG



2 CORPORATE PARK | IRVINE, CALIFORNIA 92606





OFFICE SPACE FOR LEASE

2 CORPORATE PARK | IRVINE, CALIFORNIA 92606



Voit

REAL ESTATE SERVICES

LIZ HURLEY
Sr Vice President

949.263.5325
LHurley@voitco.com
Lic. #00931852

CHRIS DRZYZGA
Vice President

949.263.5303
ChrisD@voitco.com
Lic. #01926212

PATRICK MCCREDIE
Senior Associate

949.263.5321
PMccredie@voitco.com
Lic. #02014408

2020 Main Street, Suite 100, Irvine, California 92614 | 949.851.5100 | 949.261.9092 Fax

www.VoitCo.com