

# 18818 TELLER



# ***Voit***

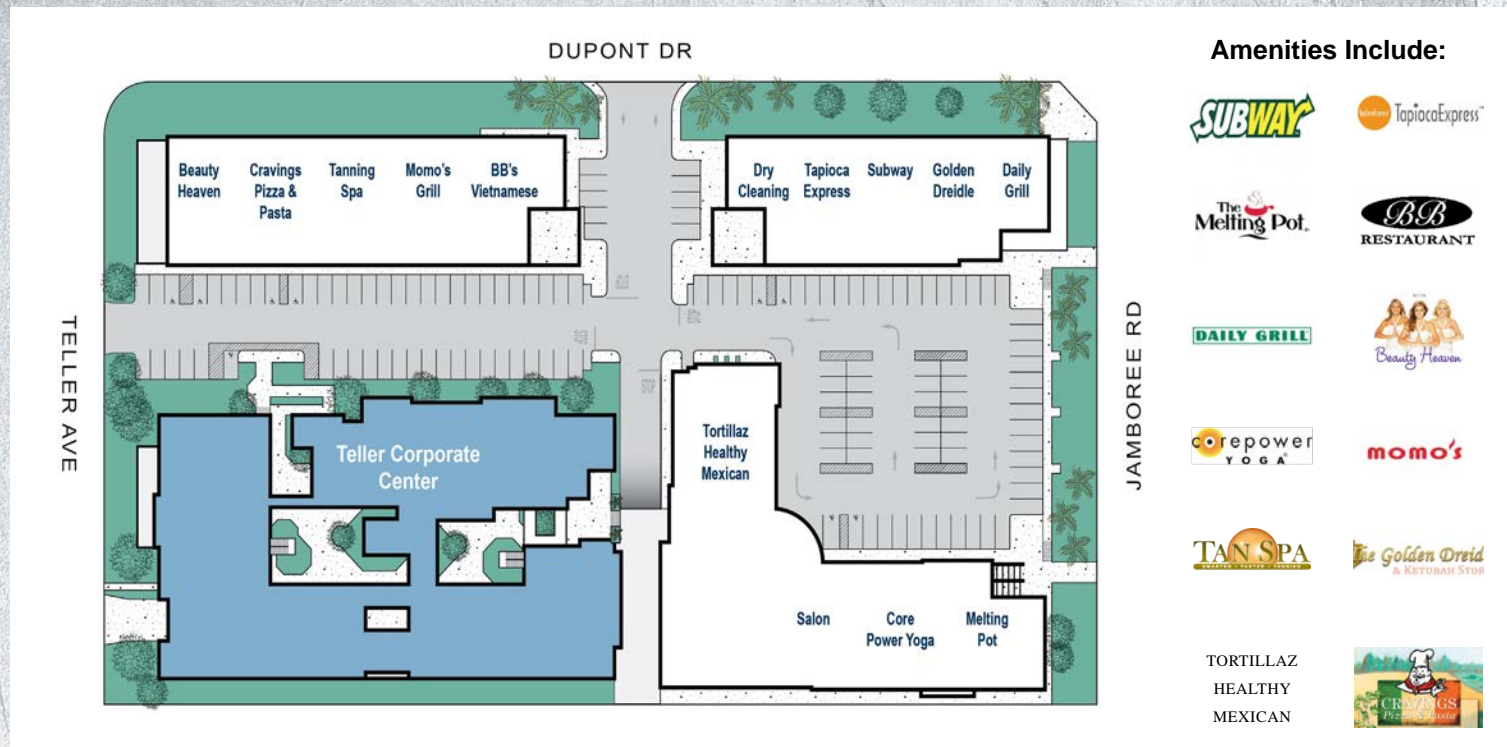
REAL ESTATE SERVICES

Property Touring Guidelines >

Chris Drzyzga  
Vice President  
Lic #01926212  
949.263.5303  
[chrisd@voitco.com](mailto:chrisd@voitco.com)

Patrick McCredie  
Senior Associate  
Lic #02014408  
949.263.5321  
[pmccredie@voitco.com](mailto:pmccredie@voitco.com)





### Monument Signage on Teller

Advertise your business the way it deserves



### Surface & Covered Parking

Reserved Parking Available



### Ideal Proximity to Airport and Fwys

Close proximity to 405, 55, and 73 Freeways



### Abundant Food Options

Increase productivity with 9 restaurants within walking distance



### Elevator Served

Making it convenient for everyone to visit your office



### Close Access to Irvine Spectrum

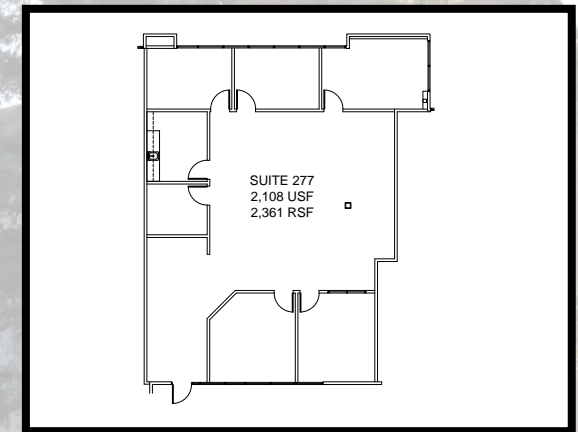
Endless options for lunch meetings and happy hours



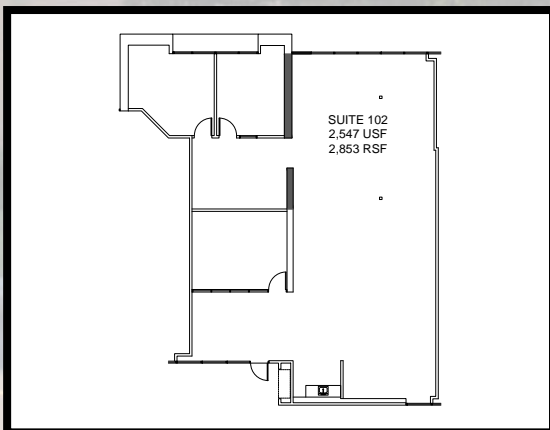
## Availabilities

| Sq. Ft.  | Suite | Description   | Available | Rate/SF    |
|----------|-------|---|-----------|------------|
| 2,853 SF | 102   | 2 Offices, Conference Room, Open Area, Reception & Sink                 | Vacant    | \$2.50 FSG |
| 1,908 SF | 110   | 3 Offices, Conference Room, Open Area, Reception & Sink                 | Vacant    | \$2.50 FSG |
| 2,918 SF | 270   | 8 Offices, Conference Room, Break Room with Sink, Reception & Open Area | Vacant    | \$2.50 FSG |
| 2,361 SF | 277   | 5 Offices, Conference Room, Break Room with Sink, Reception & Open Area | Vacant    | \$2.50 FSG |

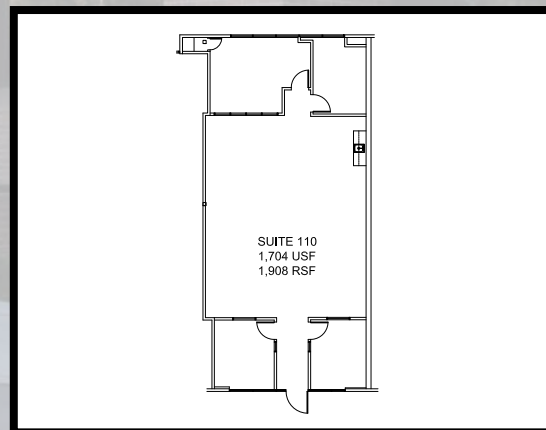
### Suite 277 - ±2,361 SF



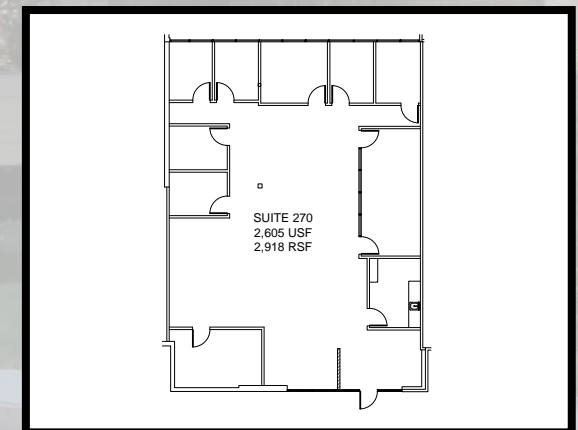
### Suite 102 - ±2,853 SF



### Suite 110 - ±1,908



### Suite 270 - ±2,918 SF







# **Voit**

REAL ESTATE SERVICES

**CHRIS DRZYZGA**  
Vice President  
Lic. #01926212  
949.263.5303  
chrisd@voitco.com

**PATRICK MCCREDIE**  
Senior Associate  
Lic. #02014408  
949.263.5321  
pmccredie@voitco.com

